

*The Tool Management Module allows the user to allocate the tools required to undertake maintenance or repair work. Using a graphical planning board, tools can be allocated to a work order, an employee or even a customer. The IMPACTxp System automatically issues a warning of any tool shortages or overloads, which means that the user is able to plan ahead.*

It is also possible to enquire on existing bookings from the same planning board and make changes or cancellations as necessary. This means that the user does not have to move between different screens to manage equipment.

The functionality of this module is extended even further, with the ability to enter charge rates. The system automatically calculates a fee for usage, which means that tools can be hired out.

All items are automatically monitored and can be located at any time, which is especially useful in the case of small hand tools that are easily misplaced. The system also reports on tools that have not been returned to stores by a proposed date.

### ● Flexible Tool Register

The IMPACTxp flexible template design allows the user to create a customised asset template for the identification of tooling equipment. This means that a filter can be applied to the asset register to view and/or print only tools.

The user is then able to define relevant information by type of tool, including exact stores location and amount in stock. Each time a tool is booked or hired out, IMPACTxp would automatically decrease the stock number.

Individual charging methods can also be recorded, particularly if the tool is to be hired out. Each type of tool can have different charging rules. For example, the user might define that eight days use would incur a two-week charge. The user can also elect to charge the time booked or the actual time of use – whichever is greater.

### ● Graphical Planning Board

The IMPACTxp booking schedule is an interactive graphical display board where multiple tasks or enquiries can be carried out from the same screen.

The user is able to view the booking itinerary for each tool by calendar day or week and can drill down to individual booking details. A drill down facility also exists to the individual tool record.

Should there be an overburden, the user is able to change or cancel a booking from this same screen.

A booking can also be added, by simply clicking the area on the schedule where the booking is to start for the tool concerned.

The booking schedule therefore allows the user to carry out the whole planning process from the same convenient screen.



[Enquire On A Tool]

### ● Tool Hire

The user has the option of simply “booking” the item, or placing it immediately “on hire”. By booking an item, the tool is reserved for a point in time. When that time is reached, IMPACTxp will automatically change the status to “on hire” and commence with the hire period.

The IMPACTxp system can book tools to work orders, employees or customers.

## SoftSols Group:

### ASIA PACIFIC

SoftSols (Asia / Pacific) Pty Ltd

5 Park Road, Glen Iris  
Victoria 3146, Australia

Tel/Fax: +61 (0)3 9809 4566  
Email: asia@impactxp.com

### EUROPE, MIDDLE EAST & AFRICA

SoftSols (EMEA) Limited  
Soft Solutions Limited  
Matrix Resource Management Ltd

Matrix House, Bradford Road,  
Wrenthorpe, Wakefield,  
WF2 0QH, UK

Tel: +44 (0)1924 200344  
Fax: +44 (0)1924 200418  
Email: info@impactxp.com

### THE AMERICAS

SoftSols (North America) Inc

P.O. Box 227  
LeClaire, IA 52753-0227, USA

Tel: +1 (563) 289-2900  
Fax: +1 (563) 289-9911  
Email: ssna@impactxp.com

By entering the appropriate work order number, employee or customer code the system is able to allocate the tool and its associated hire charge to the relevant destination. When a tool is booked to a work order, IMPACTxp will automatically accumulate the charge to internal costs on the work order.

If required, the tool management module will print a booking confirmation, which means that the customer or employee has hard copy proof.

### ● *Booking from the Work Order*

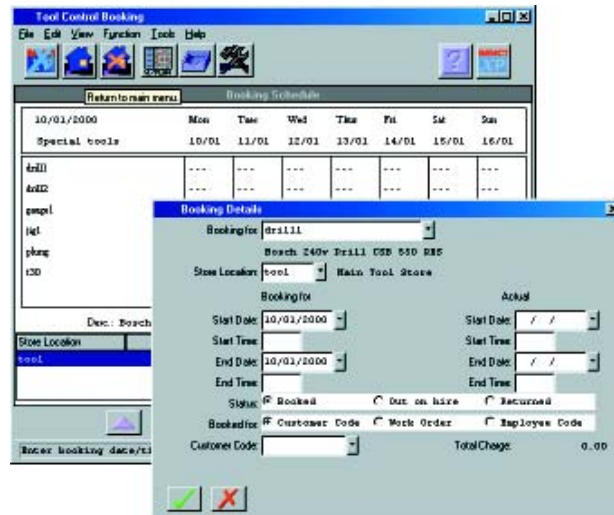
The IMPACTxp System is fully integrated. The user is therefore able to book a tool straight from a work order, through a kit list. The system looks at the tool schedule and informs the user of any shortages. When the work order is generated, the IMPACTxp system posts the booking to the tooling module. Booking from the work order means that the user does not have to actually open the tool management module during scheduling of resources.

### ● *Tool Tracking*

IMPACTxp automatically tracks tool movements. This means that tools are unlikely to become lost, as they can be located at any time. An overdue tool report also allows the user to access information on the tools that have not been returned by their promised or projected return date.

The planning of additional resources are covered in the following modules:

- Base Module (Labour)
- Stock Control (Materials)
- Facility Booking (Hiring of Rooms/Car Parking to Customers)



[Tool Control Booking]

### ● *Returning A Tool*

When a tool is returned, the total charge is calculated using the charging rules set up in the tool register.

### ● *Planned Maintenance*

Tools can have any number of maintenance schedules, which are set up in the Base Module. For example calibrated instruments may have work orders attached to them for the checking of calibration readings. Portable appliances also need to be checked to comply with electricity at work regulations. The Calibration Control Module and the Portable Appliance Testing Module are two more facilities within the IMPACTxp system regarding tools, specifically concerned with the management of test results.