

The Schedule of Rates Module allows the user to attach monetary values to measured term contract work orders that have been raised on a building or asset.

These monetary values are derived from a National Schedule of Rates Table, which can be imported into IMPACTxp using the Generic Interface Module. The NSOR table lists all tasks that can be hypothetically undertaken by contractors, including the total cost split by standard hours, labour rate and materials. The user has the flexibility to change any aspect of the table or even add further rates.

The IMPACTxp system then allows the user to apply percentage variances according to customer location or apply trade percentage deviations to chosen sections of the NSOR.

The flexibility of this module means that it can be utilised by the contractor to issue quotations, or by the customer to issue work orders to on site contractors.

The benefits of utilising this module include:

- Standardisation of Charge Rates*
- Unique Knowledge of Cost Prior to the Completion of Work*
- On Site Contractors are Prevented from Overcharging*

● **Flexible Rate File**

The National Schedule of Rates data can be electronically imported into IMPACTxp and periodically updated using the Generic Interface Module. This means that the user does not have spend time setting up the rate file. The data is broken down into sections and subsections to arrive at a unique measured term contract code (rate), for example:

- Section A – Contractors General Cost
- Section A20 – Temporary Works
- Heading A2013 – Erect Tower Scaffold
- MTC Code – A201315

The MTC code represents a cost for the work to be carried out, split by labour; materials and plant hire and can be viewed against the code. The user also has the opportunity to add instructions for carrying out the task. This means that not only can the cost be standardised – the quality of the work can be too.

The IMPACTxp system offers the maximum flexibility by allowing the user to change or even extend the rate file.

SoftSols Group:

ASIA PACIFIC

SoftSols (Asia / Pacific) Pty Ltd

5 Park Road, Glen Iris
Victoria 3146, Australia

Tel/Fax: +61 (0)3 9809 4566
Email: asia@impactxp.com

EUROPE, MIDDLE EAST & AFRICA

SoftSols (EMEA) Limited
Soft Solutions Limited
Matrix Resource Management Ltd

Matrix House, Bradford Road,
Wrenthorpe, Wakefield,
WF2 0QH, UK

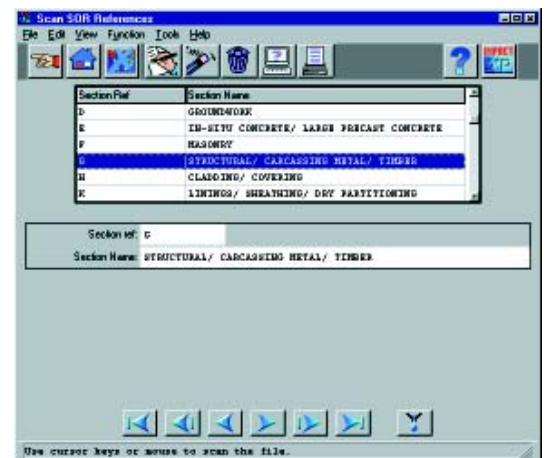
Tel: +44 (0)1924 200344
Fax: +44 (0)1924 200418
Email: info@impactxp.com

THE AMERICAS

SoftSols (North America) Inc

P.O. Box 227
LeClaire, IA 52753-0227, USA

Tel: +1 (563) 289-2900
Fax: +1 (563) 289-9911
Email: ssna@impactxp.com



[Scan SOR References]

● *Dynamic Contract Maintenance*

All contracts are recorded within IMPACTxp. The user is able to log the contract number, order number, renewal date and other sundry information. (The user can run a report to ascertain a list of those contracts nearing their renewal date).

The user can also attach tax codes, cost codes, zones and trade variations.

By attaching a zone, the user can apply percentage variances (uplift or discount) to the standard SOR according to the location of the buildings within the contract.

A trade variance option also allows the user to apply percentage variations to selected sub sections of the SOR by contract.

This means that the user can standardise the cost of work by individual contract with the minimum of fuss.

● *MTC Work Orders*

An MTC order is created in the same way as any other IMPACTxp work order. The user first selects the relevant building from a drop down list and details the priority of the work, the department and the print format for the order.

A unique feature of the IMPACTxp system means that the user can drill down to the work order history, current work orders, minor defects and help desk requests (if Help Desk is licensed) for that particular building.

When the work order information is completed, the user simply clicks on a highlighted button to access a new screen, where the rates and the contract details are determined.

The system is automatically able to locate the contract for the selected building. However the user can override this if necessary. Each section of the rate schedule is then selected from drop down lists and the MTC code is determined.

When the MTC code is selected, the system automatically displays the cost of the work for labour, materials and plant hire. The user has the ability however to change any or all of these fields.

The user is also able to specify if the work order incurs a call out fee or if the cost of the work can be reclaimed (for example vandalism).

The system then works out a total cost for the work to be carried out taking into account trade variations and zones. The work order is then completed. The user is able to select multiple MTC codes for every work order.

● *Work Order Validation*

The status of work orders can be automatically changed throughout the work order validation process. When the contractor completes the work order, time is logged and the status is changed. The work order can then be passed to a supervisor for validation that there is a match between the raised order value and what the contractor has charged for the work.

When this is validated, the status is changed again and the work order can be costed and archived. It cannot be passed for payment until the relevant supervisor has changed the status. This ensures that the contractor is unable to overcharge.



[Add A Work Order]

This module is popularly utilised with:

- Base Module (Mandatory)
- Contractor Billing
- Costing & Budgeting