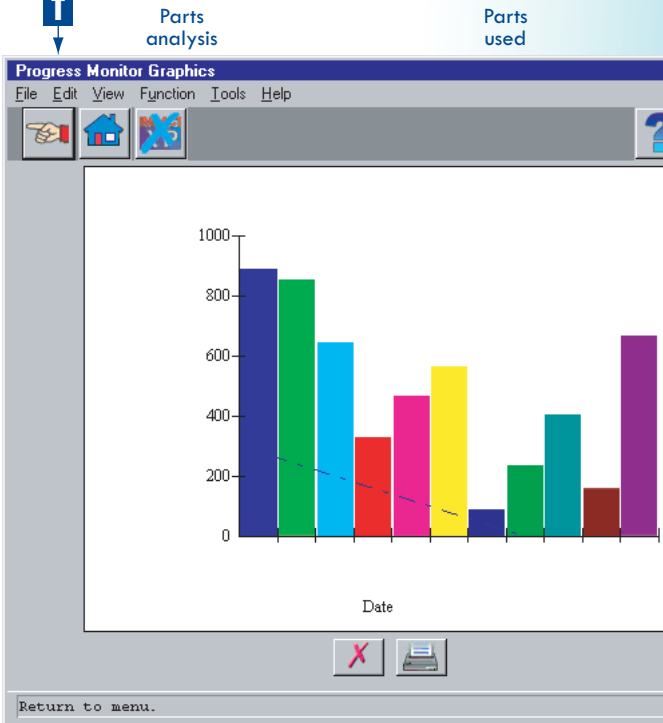




...WORK ORDERS

INPUT



Cost per property

On going requests

Cost per type of job

Employee availability

Progress Monitor Graphics
File Edit View Function Tools Help

Plant No: First
Plant No: Last

Start classification: First
End classification: Last

Start user spare: First
End user spare: Last

Planned Unplanned Both

Start date: End date:

Actual Rolling

Monthly Weekly

Graph Type: Material Cost
Total Cost
Number of Jobs

Line Scatter Bar Pie

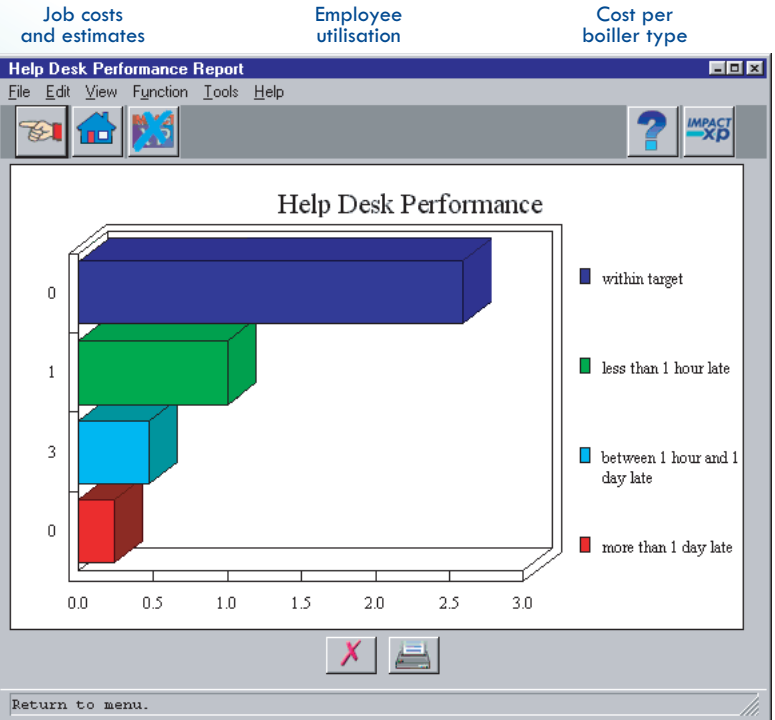
3 Dimensional Trend Line

Select which item to graph.

Completed requests

No. jobs in each area

Performance reporting



Overtime reporting

Help desk performance

HELP DESK...