



Worldwide paper consumption this century has increased four times faster than population. [Native Forest Network]



Issues for the paper & pulp industry

In the highly capital-intensive paper and pulp industry, equipment has to be fully utilized on a 24-hour basis to obtain a sufficient return on investment. This makes the industry sensitive to fluctuations in demand and adequate profit margins are vital to provide the investment necessary to remain competitive.

Increasing productivity, improving efficiency, reacting quickly to customers' changing needs, and increased profitability are constant issues for mill production managers. The battle is to add value to the production process.

As in other industries, equipment can often be unreliable, unpredictable and prone to breakdowns. This can result in a costly loss of production, involving scheduling

employees, parts and tools to get production running again. The required resources may not be readily available, which results in delays, further expense and unnecessary inconvenience.

Equipment down time can interrupt production schedules in mill facilities to a point where the best integration with sales systems and the most sophisticated supply chain planning become superfluous. Plant maintenance can even consume as much as 10 percent of operational expenditure in paper and pulp environments.

Management therefore needs to look closely at asset management in the drive to add value to the production process and minimize the chance of unexpected breakdown.

How can IMPACTxp solve these issues ?

SoftSols Group can provide specialist maintenance solutions to the paper and pulp industry based on over 20 years experience of supplying its IMPACTxp maintenance system. Using IMPACTxp to improve maintenance practices can provide mill managers with one of the best opportunities for a fast return on investment.

IMPACTxp provides tools to schedule predictive maintenance, preventive maintenance and full plant shutdowns. Multi-site capabilities provide opportunities to rationalise equipment and spare part usage while budget and cost controls give managers the tools to monitor performance. Integration with core business and financial systems ensures that

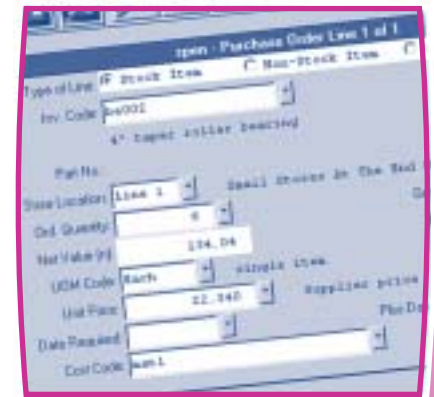
IMPACTxp fits seamlessly into your mill operations and our skilled engineers and consultants will use the flexibility of IMPACTxp to meet your exact needs.

Paper and pulp companies like yours are using IMPACTxp to:

- *Reduce breakdowns*
- *Predict maintenance requirements*
- *Plan shutdowns effectively*
- *Reduce inventory costs*
- *Increase equipment availability*

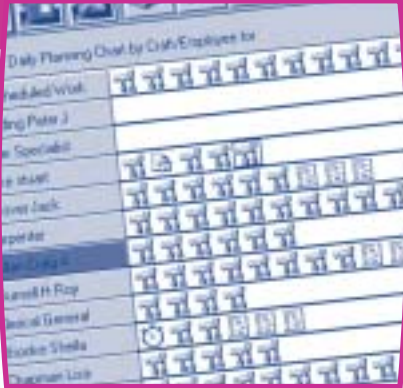
Introduce yourself to us today to find out how IMPACTxp can add value to your mill.

Key benefits of IMPACTxp >>



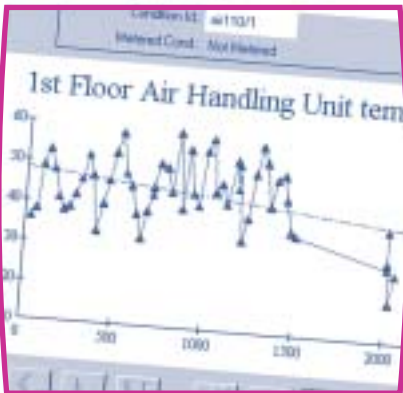
“ Towards the end of the evaluation period we revisited the shortlist and were surprised by how many changes and improvements had been made to IMPACTxp over the 12 months since we first looked. A lot of the changes were based on things that we had suggested. ”

Mechanical Operations Manager, BPB



Work Order Scheduling

- Real-time graphical planning board
- Forward load projections with "What-If" capability
- Production requests and Help Desk
- Full work planning for spares, tools and people



Predictive Maintenance

- Unlimited number of condition indicators
- Define warning and out of tolerance actions
- Automatic import of equipment condition data
- Graphical trending and analysis

Preventive Maintenance

- Calendar, run time and condition based maintenance
- Automatically import running hours from equipment
- Multiple level servicing with auto suppression
- Predict future demand for spare parts



Stock Control

- Integration with Microsoft Project™
- Requisition materials and services
- Budget and cost control with graphical reports
- Kit list of tools and parts required

- Multi-company, multi-store, multi-bin system
- Work order allocations and kit lists
- Alternate parts, where-used and bill of materials
- Bar coding and hand held solutions

Purchase Order Management

- Stock, non-stock and direct purchase capability
- Requisitions and purchase order authorization
- Invoice registration and matching
- Supplier performance by part

Management Reports

- Mean Time Between Failure
- Equipment pareto analysis by cost and frequency
- Fault frequency and failure analysis
- Engineer productivity reports

Other Key Features

- Tracking of movable equipment
- Financial integration with ERP systems
- Integrated CAD, photo and document viewer
- Tool management and booking system
- Calibration of instruments for ISO9000
- Graphical cost and budget reports

Some IMPACTxp users include:

- BPB
- Smith Anderson
- Linpac Corrugated
- Millar Western Forest Products
- St Regis
- West Australia Chip and Pulp

ASIA PACIFIC

SoftSols (Asia / Pacific) Pty Ltd

5 Park Road, Glen Iris
Victoria 3146, Australia
Tel/Fax: +61 (0)3 9809 4566
Email: asia@impactxp.com

EUROPE, MIDDLE EAST & AFRICA

SoftSols (EMEA) Limited
Soft Solutions Limited
Matrix Resource Management Limited

Matrix House, Bradford Road,
Wrenthorpe, Wakefield, WF2 0QH, UK
Tel: +44 (0)1924 200344
Fax: +44 (0)1924 200418
Email: info@impactxp.com

THE AMERICAS

SoftSols (North America) Inc

P.O. Box 227
LeClaire, IA 52753-0227, USA

Tel: +1 (563) 289-2900
Fax: +1 (563) 289-9911
Email: ssna@impactxp.com