

The Portable Appliance Testing Module enables the user to record the results of essential safety checks on portable electrical devices held within the IMPACTxp system. These safety checks, such as insulation and earth leakage are carried out by standard PAT testing equipment and are vital for the compliance of electricity at work regulations.

The IMPACTxp System allows the user to schedule work orders to prompt safety checks to be carried out. PAT Testers can then automatically download the results of these checks, which are then logged against the relevant work order and plant histories. When an item fails a test, IMPACTxp automatically reschedules another work order to correct the fault. When a test is successful, IMPACTxp can produce dated pass certificates, which provide the user with hard copy proof of the test results.

The Portable Appliance Testing Module's ability to schedule these safety checks and manage the results means that the user can be confident of meeting the standard electricity regulations.

● Scheduling PAT Work Orders

IMPACTxp library jobs can be used to schedule electrical safety checks. When a task is due, the system will automatically print the work order, which means that the user does not have to rely on memory to ensure these vital tasks are carried out.

A PAT library job is created in the same way as any other scheduled task. The user therefore has the ability to allocate electrical checks to a specific employee or craft and attach Word Processed documents and/or images. PAT jobs have their own job type, which means that the user is able to use a filter to view and/or print only those work orders associated with electrical safety checks. The system is therefore able to produce a report detailing outstanding PAT work, ensuring compliance with regulations.

Safety checks are usually carried out on more than one piece of equipment at any one time. For this reason, IMPACTxp utilises a facility called "route sheets". Route sheets enable the user to "route" a task on a work order to groups of plant equipment, which are defined either by their location, responsibility or description. This means that only one work order is required to schedule safety checks on multiple items of electrical plant.

SoftSols Group:

ASIA PACIFIC

SoftSols (Asia / Pacific) Pty Ltd

5 Park Road, Glen Iris
Victoria 3146, Australia

Tel/Fax: +61 (0)3 9809 4566
Email: asia@impactxp.com

EUROPE, MIDDLE EAST & AFRICA

SoftSols (EMEA) Limited
Soft Solutions Limited
Matrix Resource Management Ltd

Matrix House, Bradford Road,
Wrenthorpe, Wakefield,
WF2 0QH, UK

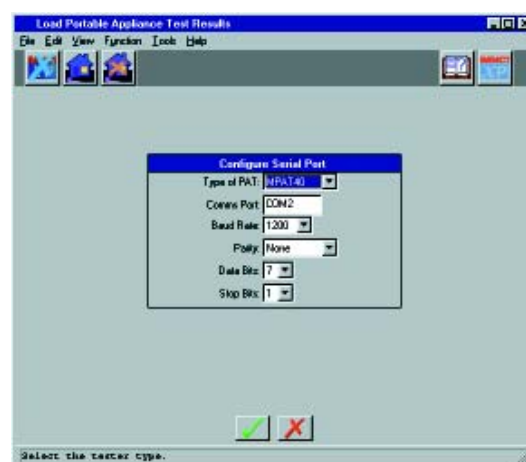
Tel: +44 (0)1924 200344
Fax: +44 (0)1924 200418
Email: info@impactxp.com

THE AMERICAS

SoftSols (North America) Inc

P.O. Box 227
LeClaire, IA 52753-0227, USA

Tel: +1 (563) 289-2900
Fax: +1 (563) 289-9911
Email: ssna@impactxp.com



[Load Portable Appliance Test Results]

● *Standard PAT Testers*

When a work order is issued, a PAT Tester is used to carry out the vital safety checks. These include earth continuity, insulation, flash tests, fuse ratings, load and earth leakage.

Any PAT Tester can be utilised. However, standard IMPACTxp interfaces exist, which automatically download test results from the following PAT Testers:

MPAT 40 (From Metrotest)

MPAT 60 (From Metrotest)

The SEAWARD range of Testers

Before the test is carried out, the user traditionally enters the asset number into the PAT Tester by hand. However, where PAT Testers have a bar code reader attached, the user could simply “swipe” the bar code to automatically register the asset information. The IMPACTxp Bar Coding Module provides the facility to print asset bar code labels if this feature is required.

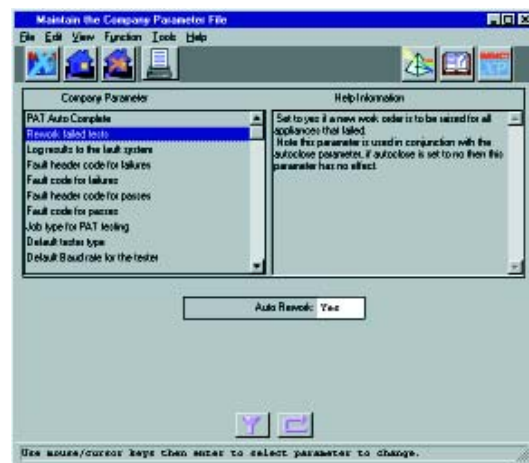
● *Automatic Input Of Test Results*

Provided a standard PAT Tester is used the details of the tests can be downloaded into IMPACTxp. The results include details of the date, the type of check, who carried it out and the associated test result. These details are then logged against the work order, with a pass or fail result. The results are also posted directly to the plant register record of each appliance tested and can be viewed in the history.

Alternatively, the IMPACTxp Generic Interface module can be utilised to create interfaces from PAT Testers not listed above or the user can enter the details and results manually.

● *Work Order Completion*

When all items are completed on the route sheet, the work order can be automatically closed down. The user then has the option of printing pass certificates detailing the test results. These certificates can be printed whenever needed, which means that the user is able to produce a hard copy as proof should the need arise.



[Maintain The Company Parameter File]

● *Reschedule Failed Equipment*

Should equipment fail a test, the system will automatically reschedule another work order. This means that the user is immediately prompted to either correct the problem or replace the unsatisfactory equipment ensuring that dangerous equipment does not remain in use. A report can also be accessed, which details all items that have failed recent tests.