

The Calibration Control Module enables the user to record the results of essential calibration checks on instruments held within the IMPACTxp System. These instruments, such as callipers and thermometers are typically used to measure the quality of finished products and must themselves be placed under a rigorous checking and monitoring process, to meet quality standards such as ISO9000 and QS9000.

The IMPACTxp System allows the user to schedule work orders to prompt a calibration check to be carried out. When an instrument fails a check, IMPACTxp will automatically block the usage of this item and schedule a work order for re-calibration.

The user can also determine a selection of suitable plant items for each calibrated instrument. IMPACTxp would then block the usage of an instrument on an unauthorised plant item.

The Calibration Control Module provides full traceability of every instrument, which means that the user can pinpoint the exact location and/or status of each item at any one time.

The Calibration Control Module provides the user with the confidence to strive for the ultimate in quality control.

provides the user with a dynamic set of fields for specifying acceptable calibration measurements. Specific checkpoints on the instruments are defined, along with the associated unit of reading. Tolerance levels can also be particularized, which allow for acceptable upper and lower reading levels and a percentage may also be used to allow for reading error. For example, Checkpoint 1 is at 10°C, with tolerance levels at 10°C. When the item is checked against a “Master” a percentage of 2% allows for reader error.

In some cases, an instrument may not be suitable for use on specific plant items. For this reason the IMPACTxp system allows the user to specify a list of assets for each instrument. This means that an instrument can not be booked to an unauthorised plant item.

● Scheduling

IMPACTxp library jobs can be used to schedule a calibration check. When a check is due, the system will automatically print the work order, which means that the user does not have to rely on memory to ensure a calibration check is carried out. Like all types of work order, calibration checks can be allocated to a specific craft or employee and have Word Processed documents and/or images attached to them.

Calibration checks can also be prompted by the Run Time Control Module. A work order would be automatically printed after an instrument had been used a certain number of pre-determined times. However, if an instrument had not been issued, IMPACTxp would default to the time based library job.

An IMPACTxp library job can also be used to trigger a re-calibration. When a calibration check fails, IMPACTxp will automatically print the work order for re-calibration. The user is able to specify the job type “Calibration” on a work order. IMPACTxp can filter on this job type to show and/or print only those work orders associated with calibration. Within the forward load projection report, the user is informed of any overloads in the calibration schedule.

SoftSols Group:

ASIA PACIFIC

SoftSols (Asia / Pacific) Pty Ltd

5 Park Road, Glen Iris
Victoria 3146, Australia

Tel/Fax: +61 (0)3 9809 4566
Email: asia@impactxp.com

EUROPE, MIDDLE EAST & AFRICA

SoftSols (EMEA) Limited
Soft Solutions Limited
Matrix Resource Management Ltd

Matrix House, Bradford Road,
Wrenthorpe, Wakefield,
WF2 0QH, UK

Tel: +44 (0)1924 200344
Fax: +44 (0)1924 200418
Email: info@impactxp.com

THE AMERICAS

SoftSols (North America) Inc

P.O. Box 227
LeClaire, IA 52753-0227, USA

Tel: +1 (563) 289-2900
Fax: +1 (563) 289-9911
Email: ssna@impactxp.com

● Flexible Instrumentation File

The IMPACTxp flexible template design allows the user to create a customised asset template for calibration equipment. This means that a filter can be applied to view and/or print calibration items from the asset register.

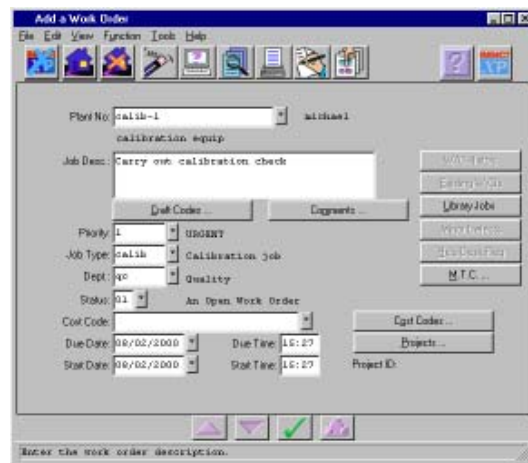


[Enquire On An Instrument Record]

The IMPACTxp System also allows the user to specify when an item is a “Master Instrument”. (During a calibration check, an instrument is compared to a “Master Instrument” that displays the correct readings). The instrument register also

● *Condition Checks*

IMPACTxp will prompt the user to carry out a calibration check by printing a work order held in the library file.



[Add A Work Order]

When the check is completed, IMPACTxp is able to verify the readings taken, against the pre defined checkpoints, taking into account tolerance levels and reader error percentages. The system will therefore ascertain whether an instrument has passed or failed a calibration check.

If a condition check has failed, IMPACTxp will automatically:

- Block further usage of the instrument*
- Generate the library job for re-calibration*
- Record a non conformity number*

The unique IMPACTxp Email system also allows for nominated users of the system to be informed of the instrument's failure.

● *Re-calibration*

IMPACTxp will automatically generate a library job to carry out a re-calibration if an instrument has failed a check. This means the user can be sure that unreliable instruments will not be in general circulation within the plant.

A "Master Instrument" is used to re-calibrate an item in-house. However, a work order may specify that the instrument must be re-calibrated by the supplier or by a specialist.

When an instrument is booked back into stores a certificate number is entered. This ensures that there is proof of an instrument's quality.

● *Instrument Movement*

Each time an instrument is moved, IMPACTxp records the details in the instrument movement file. This means that the user can pin point the exact location or status of an instrument at any given time.

● *Traceability*

IMPACTxp tracks the movements of an instrument and records the details into history, thus providing the user with a full audit trail for each item. Should an instrument consistently fail calibration checks, the user is able to analyse the movement file to determine the root of the failure. IMPACTxp can therefore trace a fault all the way back to the master instrument used during re-calibration.

A usage report will also provide the user with a list of plant items that an instrument has come into contact with. This means that if an instrument is faulty, the user is able to assess any associated effects on equipment.

A current location report will also reveal the exact instrument location. This means that should the user be required to carry out a calibration check, the instrument can be located immediately.